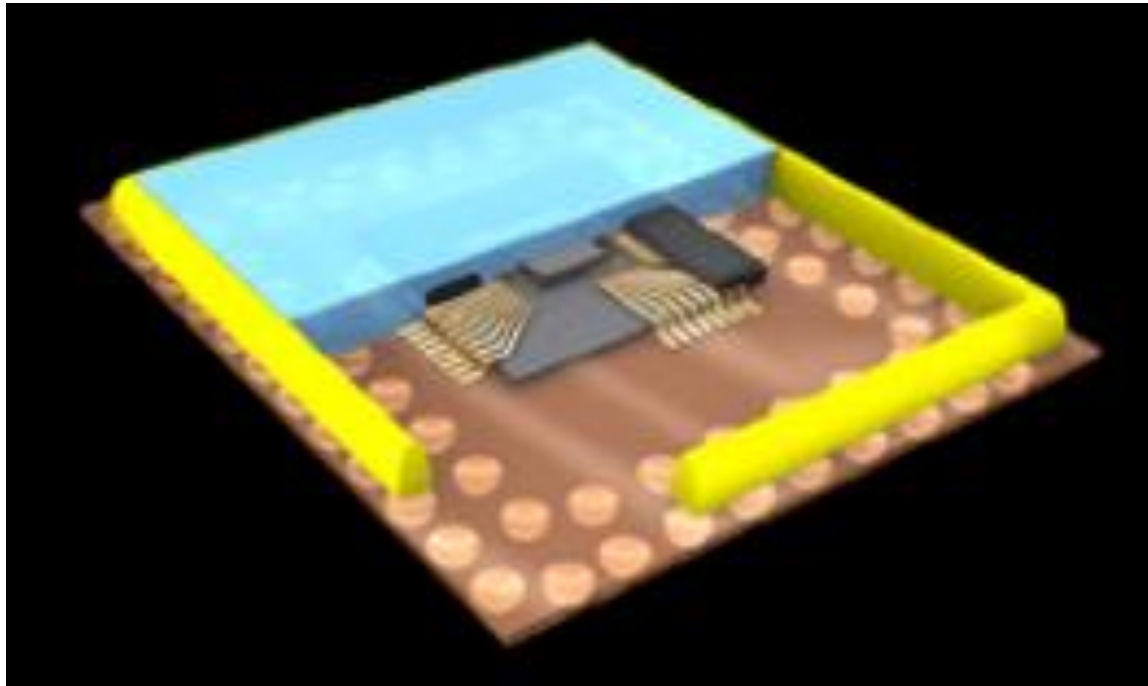


ENCAPSULANTS

- ✓ Dam and Fill Materials
- ✓ Casting Type Encapsulant

DAM AND FILL



KEY FEATURES

➤ High Tg, Low C.T.E.

- Dam: High Aspect Ratio
- Fill: Good Flow

➤ Fast Curing

- 15 Min. in Total
- Low Warpage Option

➤ High Aspect Ratio

- G8345D: 0,5
- G8345D-37: 0,4
- G8345D-46: 0,4

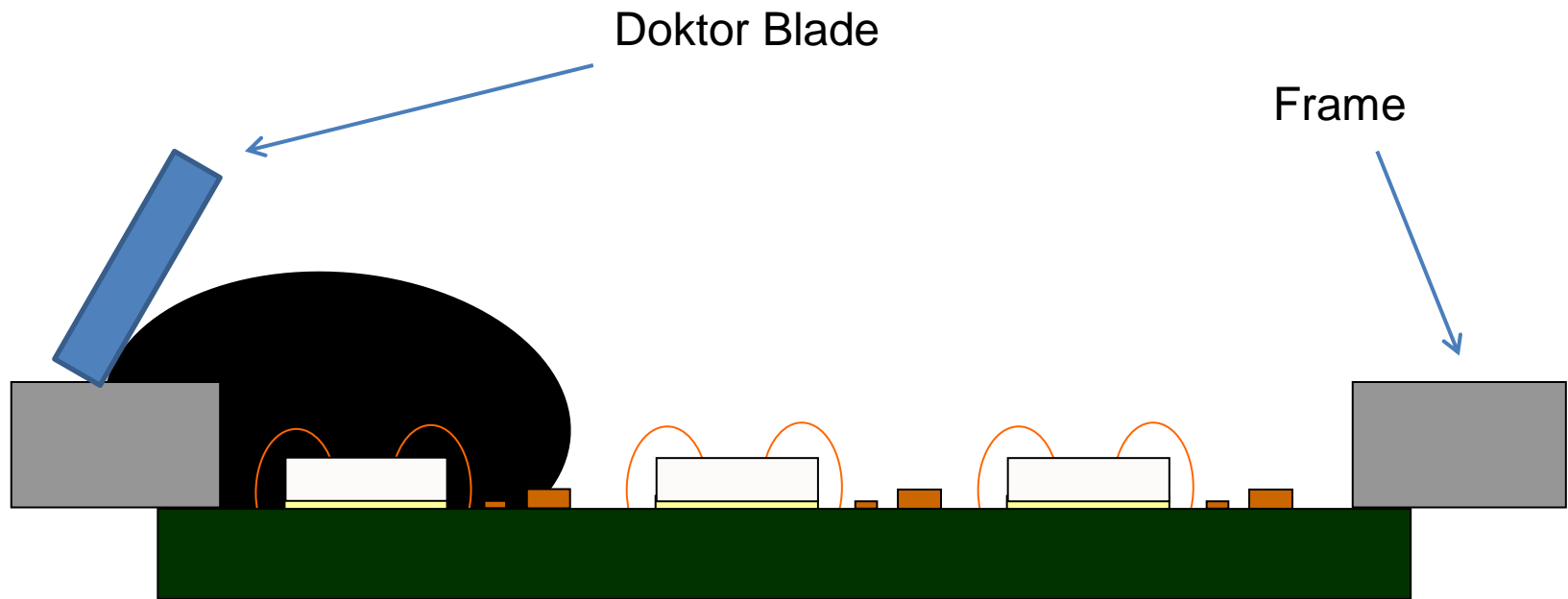
STANDARD AND FINE FILLER

			Standard Grade		Fine Filler Grade		Fine Filler Grade, RoHS II	
			Dam	Fill	Dam	Fill	Dam	Fill
			G8345D	G8345-6	G8345D-37	G8345-29	G8345D-46	G8345-146
Filler Contents		wt%	77	79	70	74	70	74
Filler Size	Mean	um	23	20	7	4	7	4
	Max	um	128	128	32	32	32	32
Viscosity		Pa.s	57	55	63	36	49	24
Thixotropic Index		-	3,1	0,9	2,7	0.8	2,6	0,9
Tg (TMA)		C	146	143	139	145	125	130
C.T.E. (TMA)	<Tg	ppm/C	15	14	24	18	27	20
	>Tg	ppm/C	60	52	81	66	84	74
Bending Modulus		GPa	16	18	11	15	11	15
Aspect Ratio		-	0.5	-	0.4	-	0.4	-
Impurity (After PCT)	Cl ⁻	ppm	<10	<10	<10	<10	<10	<10
	Na ⁺	ppm	<5	<5	<5	<5	<5	<5
	K ⁺	ppm	<5	<5	<5	<5	<5	<5

No CRM, !
no SVHC !

CASTING TYPE

➤ Chipcoat 8336-90



KEY FEATURES

- Adjusted Thixotropy Index for Casting / Spreading
- Low Tg
- Low CTE
- Low Modulus
- Low Warpage
- Long Open Time



MATERIAL CHARACTERISTICS

			CHIPCOAT8336-90
Filler Content		wt%	76
Filler Size	Mean	um	4
	Max	um	25
Viscosity		Pa.s	76
Thixotropic Index		-	1.2
Tg (DMA)		C	39
C.T.E. (TMA)	<Tg	ppm/C	22
	>Tg	ppm/C	85
Bending Modulus		GPa	10
Impurities concentration (After PCT)	Cl ⁻	ppm	<20
	Na	ppm	<5
	K	ppm	<5

Curing: 120 Min. @ 150°C

A large, stylized version of the NAVICS logo. The letters "N", "A", and "V" are filled with a green-to-white gradient. The letters "I", "C", and "S" are solid green. A red circle is positioned above the letter "i".

Thank you