



COMPAL

COMPAL

Compal AEP Introduction

21st Feb, 2013

- **Founded: 1984 / Headquarters: Taipei, Taiwan ROC**
- **Exchange: Taiwan Stock Exchange, Luxembourg (GDR)**
- **Ticker Symbol: 2324 TT**
- **Market Cap⁽¹⁾: US\$ 3.0 bn**
- **From 2001, recognized as Info Tech 100 by Business Weekly for 11 straight years**
- **In 2011, sales revenue was ranked as No. 4 among Taiwanese corporations**
- **2012, consolidated revenue reached US\$ 23.5 billion dollars**

Computer Product Experience: 24 Yrs (Since 1989)

- ◆ Notebook
- ◆ Netbook
- ◆ MediaPad
- ◆ AIO



Wireless Communications: 15 Yrs (Since 1998)

- Cellular Phone (GSM/GPRS/CDMA/3G)
- Smartphones
- PDA



Consumer Electronics: 13 Yrs (Since 2000)

- LCD TV
- Mobile Internet Device (MID)
- Digital Media Player
- Tablet PC
- Automotive Electronics



Note: At closing price on Jan. 10, 2013



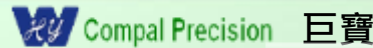
- NB / Netbook/ Ultrabook / AIO
- LCD TVs / Monitor
- Tablet / eBook/ Digital Media Player
- **Automotive Electronics**
 - Smart Phone
- GPRS/ UMTS/CDMA/LTE



Semi-conductors & Components



IC載板IC Substrate



金屬及塑膠機殼

magnesium aluminium alloy & Plastic Machine hull



無線網路通訊

Wireless communication

冠寶

Crownpo Technology Inc
晶片二極體Chip Diode



觸控面板 (薄膜式) Touch Panel

Raynnant 瑞宏

機殼表面處理imprint



印刷電路板

Printed circuit board

升寶

Compal Connector Manufacturing
連接器Connector

極創電子uPI
電源管理IC

Power Management IC

樂寶

無框面板Frameless panel

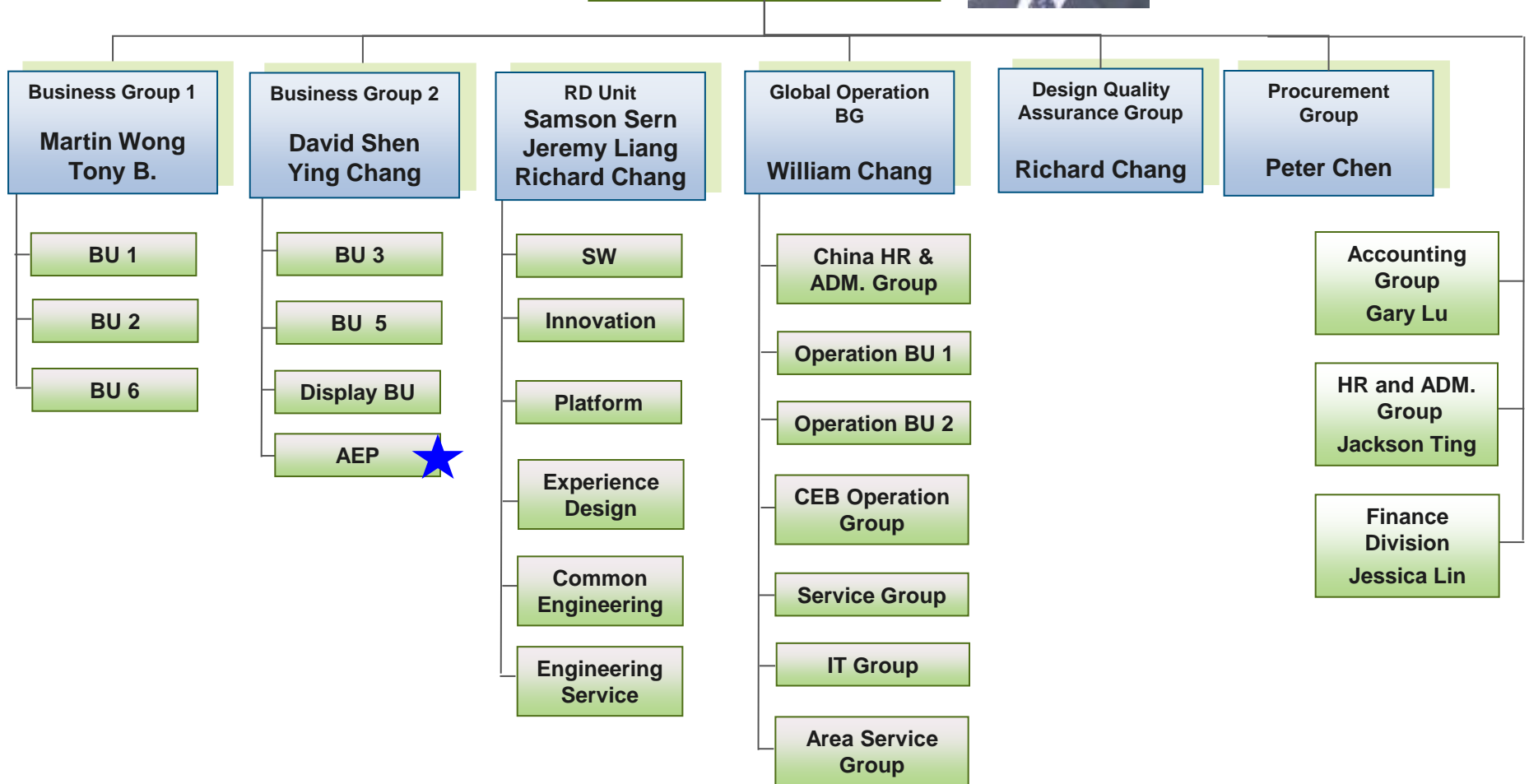


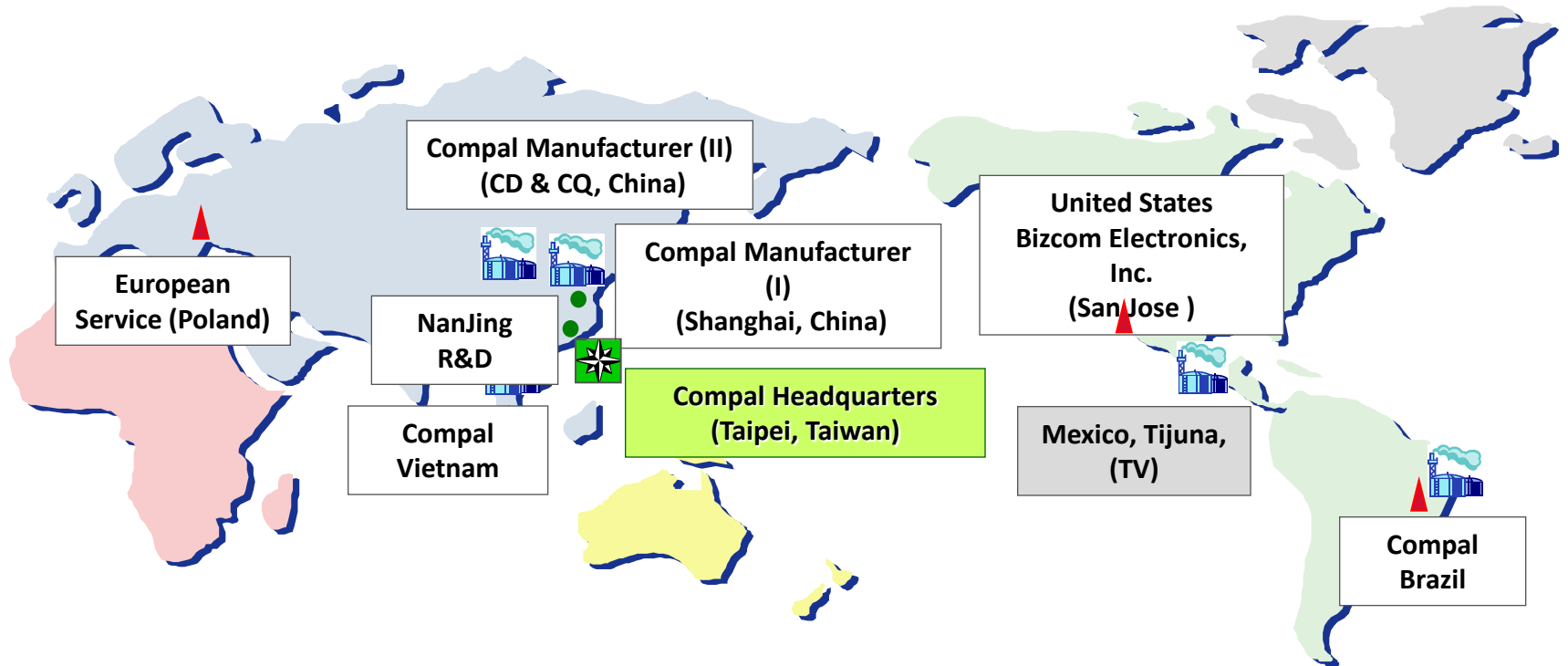
玻璃投射式電容觸控面板、觸控感測器

恆灝科技

連鉸LH
軸承Hinge

President and CEO
Ray Chen
 Executive VP
 David Shen
 Martin Wong
 William Chang
 CC Hsu





Group Headquarters



Assembly Facility



R&D Center



Service Facility

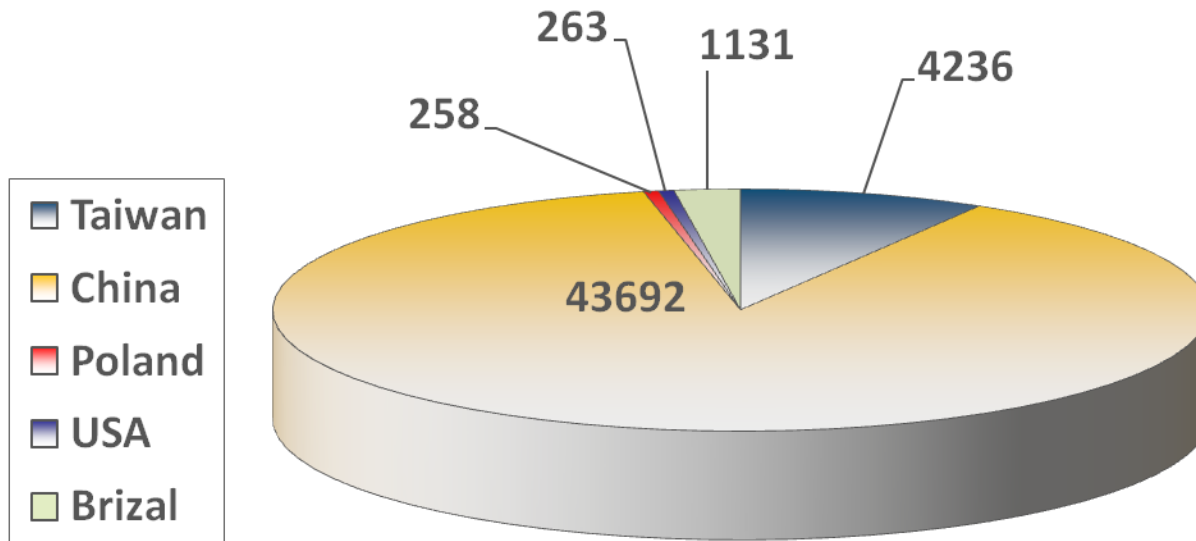
Headquarter , Taipei City Taiwan R&D (II)

Manufacturing Base (Greater Shanghai, China)

Assembly Facility (São Paulo, Brazil)

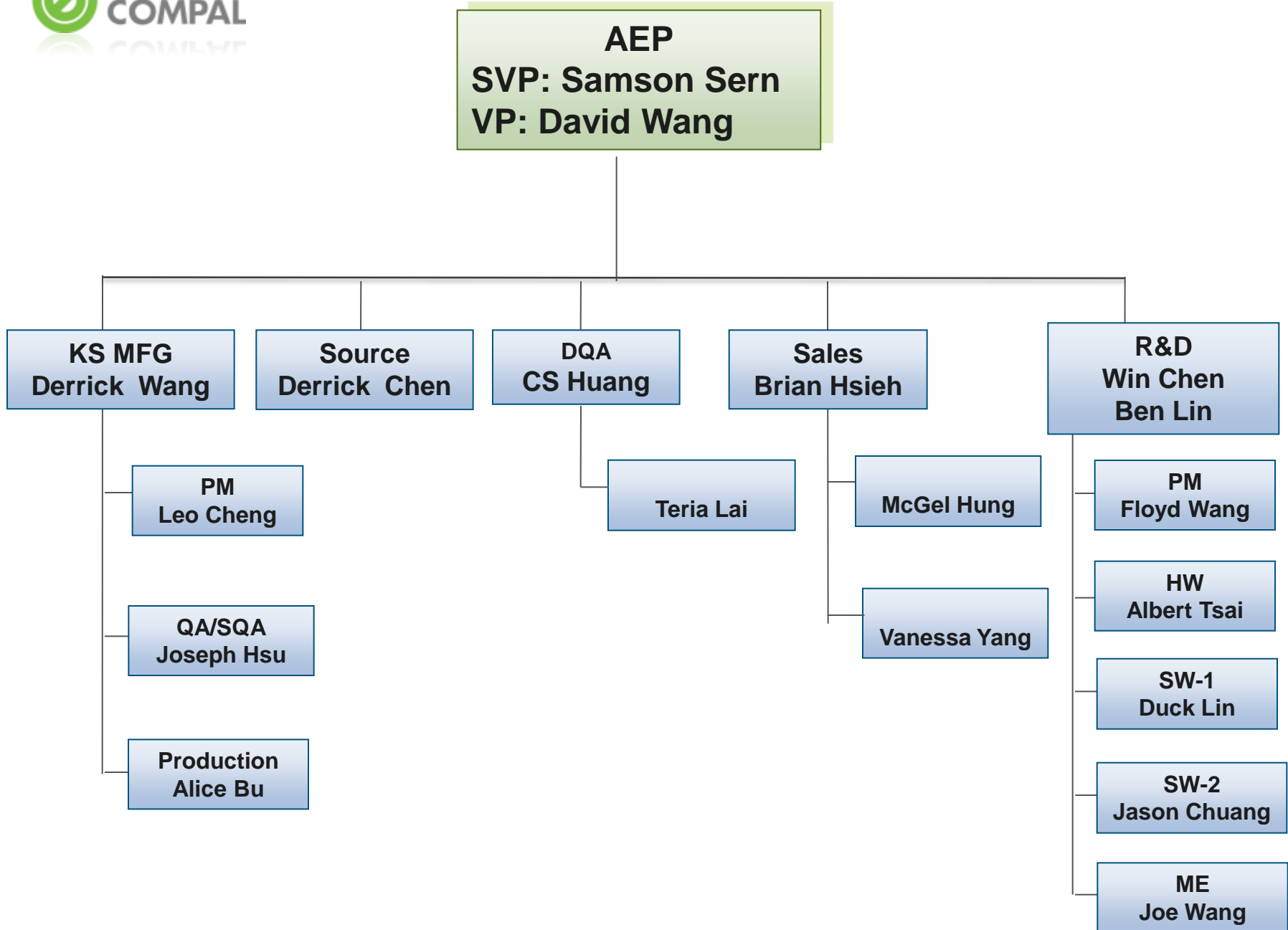
Capacity in Each Factory

Country	City	Operation Start	Monthly Capacity
China	KunShan Plant 1	Sep 2000	1.2M
	KunShan Plant 2	May 2003	1.3M
	KunShan Plant 3	Dec 2005	1.6M
	KunShan Plant 4	May 2008	1.4M
	KunShan Plant 5	Jun 2011	1.4M
	BaCheng Plant (TV)	Jun 2012	2M
	Chong Qing (CQ)	Jun 2011	1M
	ChenDu (CD)	Sep 2011	1M
Vietnam	Hanoi	May 2011	0.5M
Brazil	Sao Paulo	Mar 2009	0.2M
Mexico	Juarez (TV)	Sep 2011	0.2M



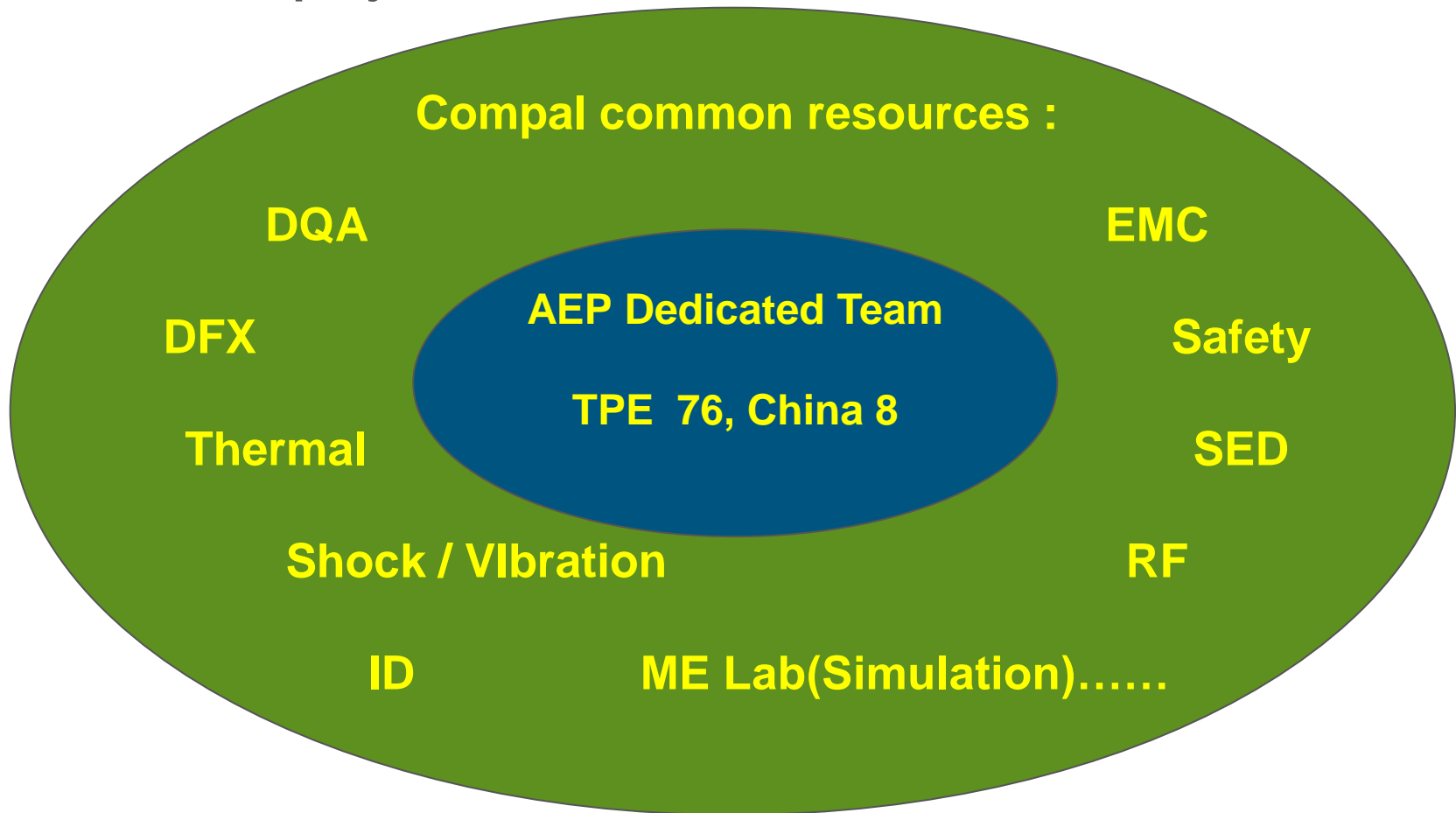
Facilities	Category	Employee	Location
Taipei	Headquarter (incl. R&D 3,500)	3,837	Taiwan
PCP	RD team	265	Taiwan
LKE	RD team	243	Taiwan
CEC	LCD Monitor/TV	2,726	China
KS Factory 1 2 3 4 5	NB factory/Consumer products	31,063	China
CQ	NB factory/Consumer products	4,876	China
CD	NB factory/Consumer products	3,762	China
CEB	NB factory	1,131	Brazil
Bizcom	Service & Config Center	263	USA
CEP	Service Center	258	Poland
TOTAL		48,424	

AEP Product Development & Manufacturing



Completed AEP Design Resources

- Dedicated team : 84 (not including common pool) capable for ODM/EMS project.



■ ODM Project I to Yulon-Nissan Motor TOBE System - 2010/10 SOP



The 3rd generation of TOBE system is a standard equipment of 2011 TEANA model of Yulon-Nissan motor, Taiwan.

■ The WinCE-based TOBE application system developed by Compal AEP SW team with the following main functions:

- Phone
- TOBE menu
- Audio
- Setting adjustment
- Trip information
- Navigation
- CCD
- Air Bag alarm
- Pop-up menu
- Security alarm

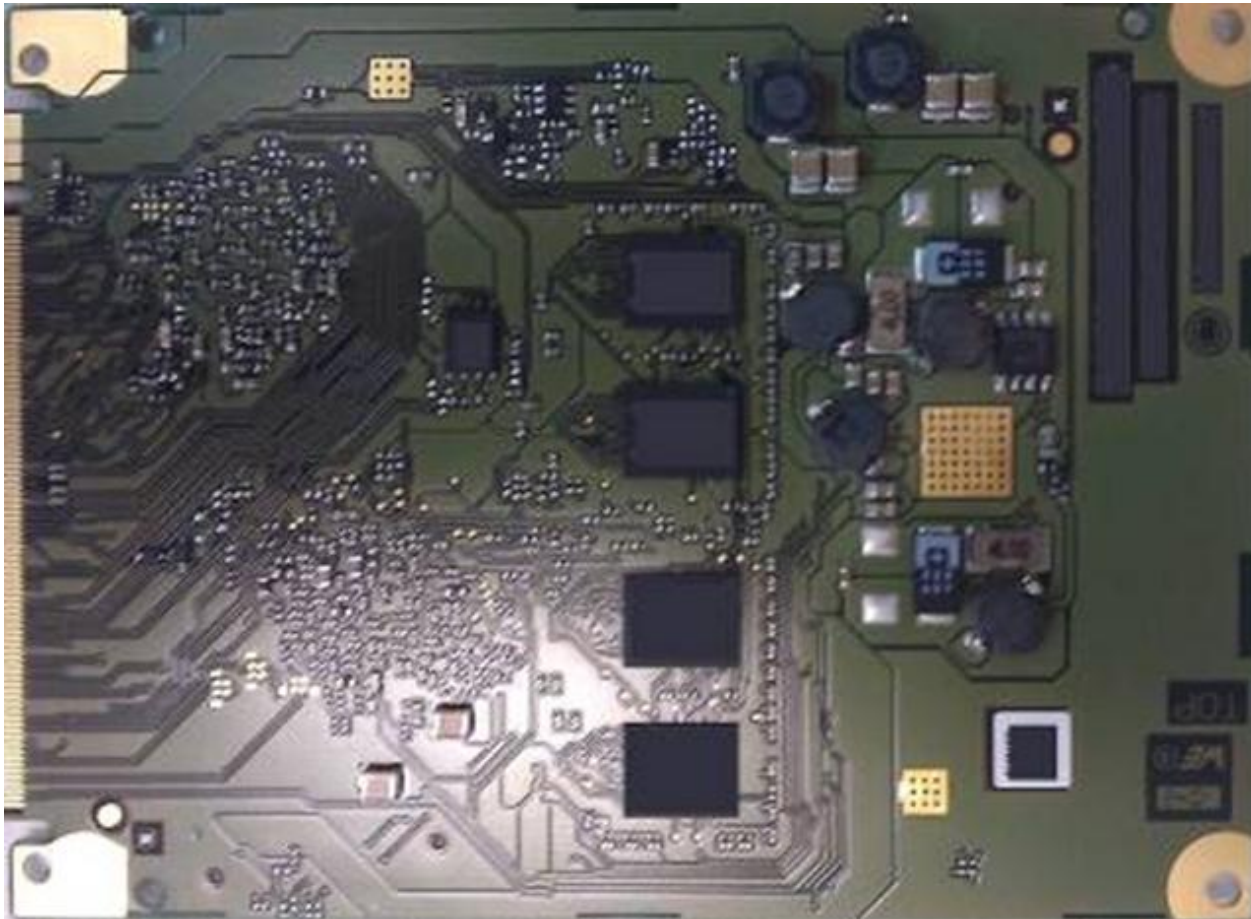
■ ODM Project II for Yulon-Nissan Motor Telematics & infotainment device - 2012/10 SOP

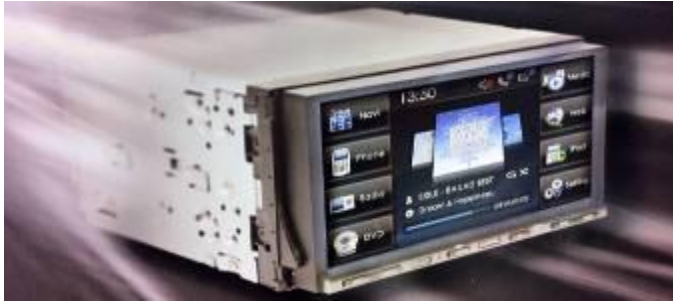


The 2013 Big Tiida model of Yulon-Nissan motor, Taiwan.

- NAVI
- Multimedia (Video/Audio/Radio)
- 3.5G/GSM
- iPhone/iPod Touch/iPod Nano connection
- SOS function and Call center service
- ECO

- **OEM/ODM Project with Major Head Unit Account**
SOP : 2012/3 for European Cars





1. The main functions of KAX50 project (2-DIN)

- Built-In DVD ROM, USB and SD card slot
- 40GB HDD, 1GB DDR2
- AM/FM/HD Tuner, Satellite Radio XM/Sirius ready, Support RDS/RDBS
- Built-in Bluetooth & GPS (DR TMC) Module
- Rear Camera Compatible
- iPod Connectivity (audio)



2. The main functions of KAX00 project (1-DIN)

- Segment or Dot Matrix(128 x32 Dots) Display
- Built-In CD ROM and USB
- AM/FM Tuner, Support RDS/RDBS
- Built-in Bluetooth Module
- Support AUX in
- CAN Bus interface (Option)



3. The main functions of JAX30 project (2-DIN)

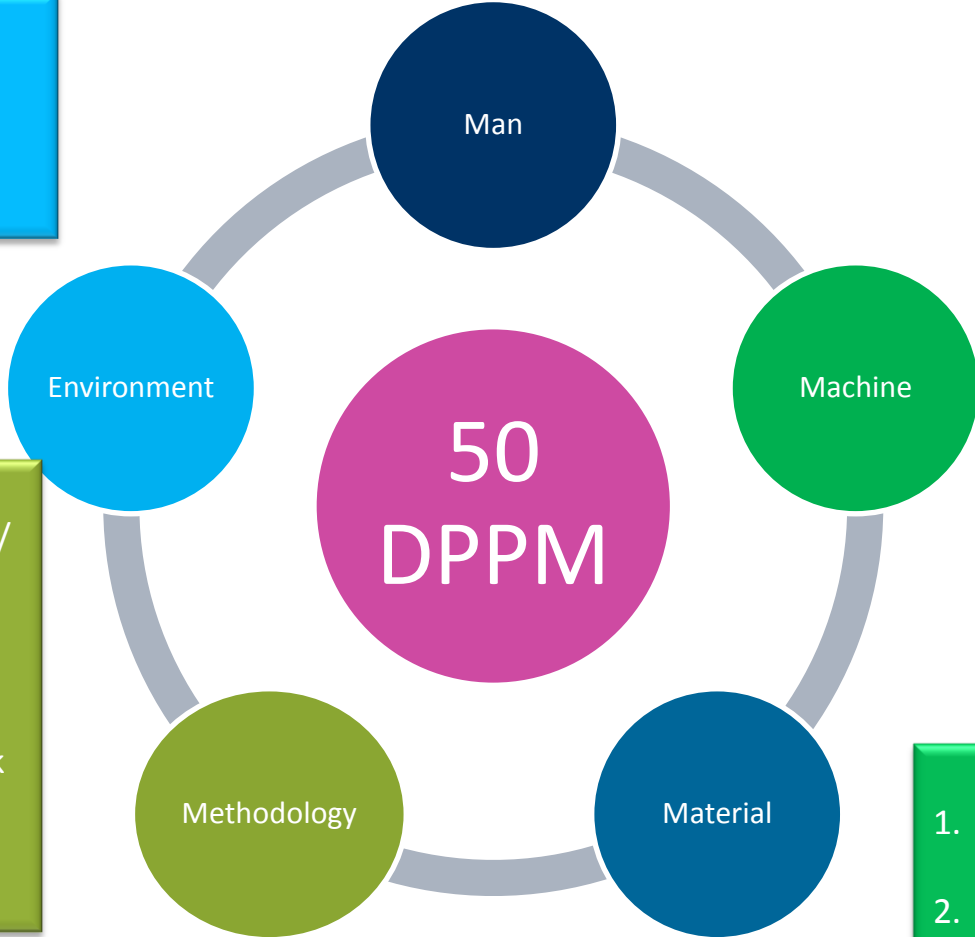
- Touch enabled TFT display
- Audio & Video (DVD) media access
- AM/FM Radio
- Hands free phone via Bluetooth
- Navigation/GPS
- SD card, USB

Production Quality Management System

- Mindset**
1. No quick & dirty.
 2. No pad add.

- Environment**
1. Auto alarm for Temp/Humidity /ESD
22~28° & 40~60%
 2. Moisture generator

- Machine**
1. Automatic for handling free (Auto labeling/ Scanning/ moving/ buffer)
 2. Tooling Poka-Yoke
 3. Equipment FMEA Approaches



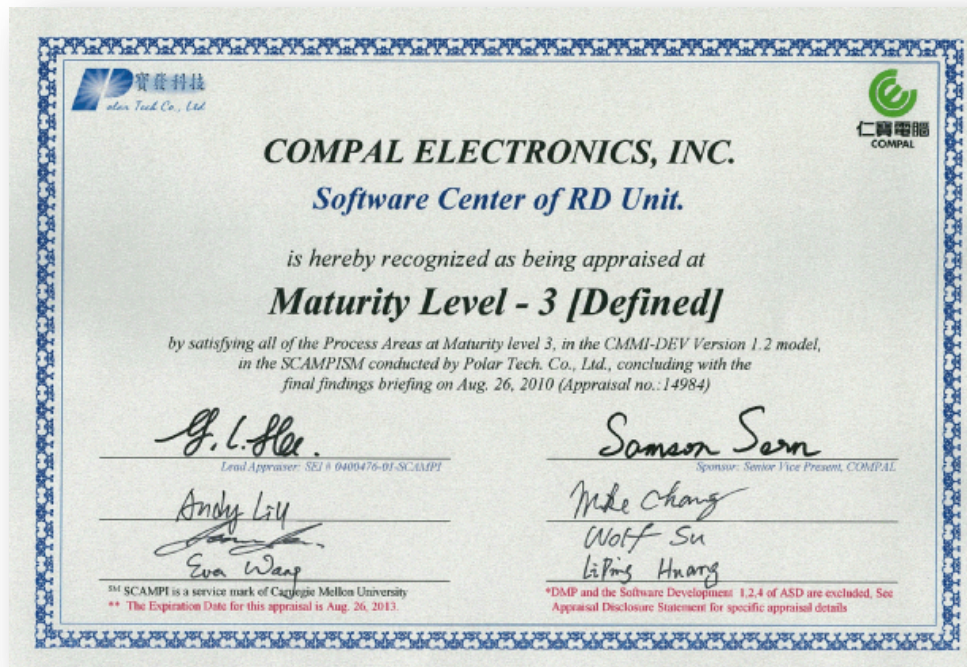
- Methodology**
1. APQP/PPAP/MSA/SPC/ FMEA (Workbook)
 2. FIFO/MSD / Solder pastor
 3. SFIS for Complete traceability & NG Lock
 4. Visible MI/ OK NG awareness

- Material**
1. Preventive Handling: All reel Stand up,
 2. System control: MSD, FIFO
 3. SVLRR<20 DPPM

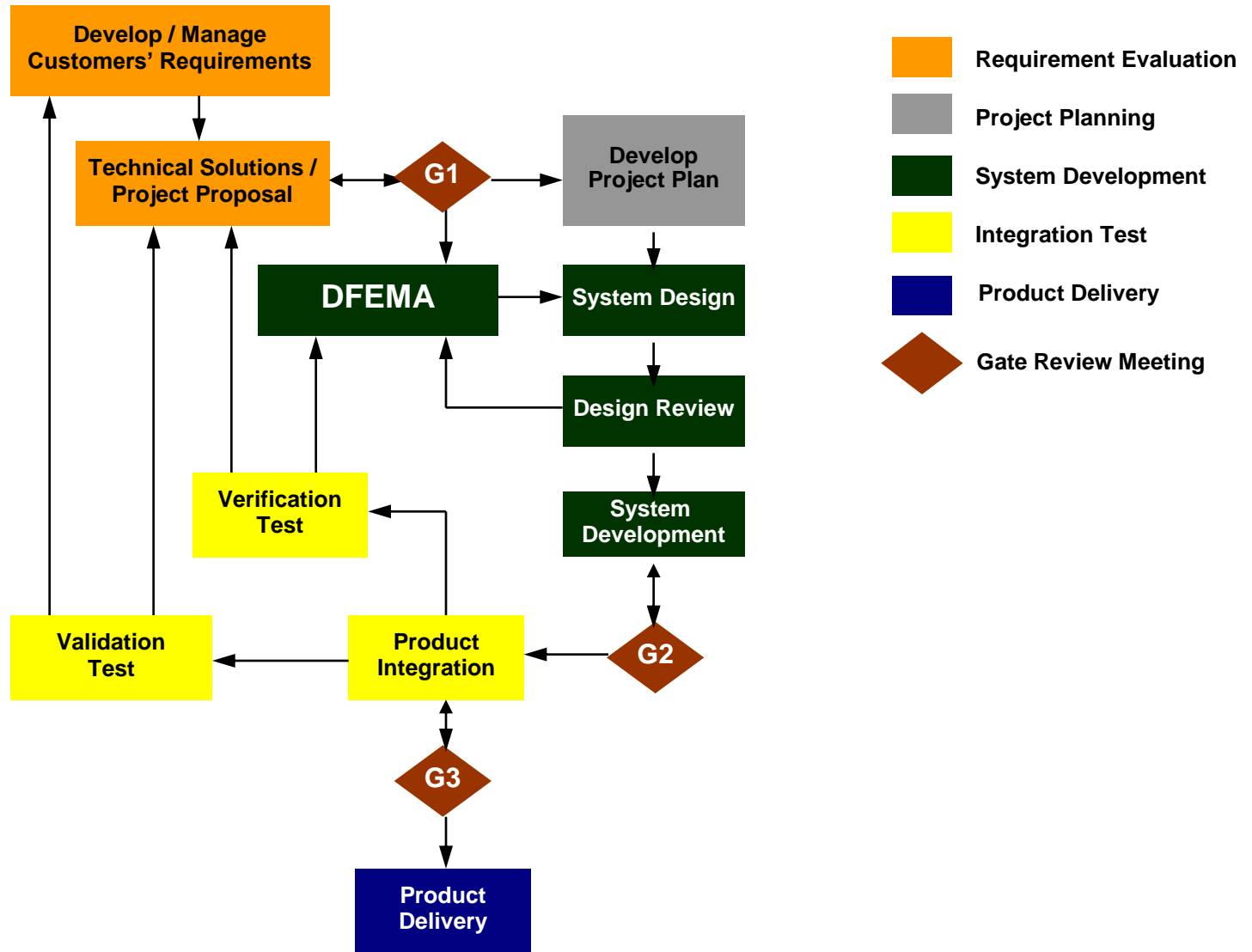
- **Certificated TS 16949 Compliance from Y2009 – Both Manufacturing and Design Sites**



- 6+ years on developing system applications for vehicle devices.
- CMMI-ML3 Appraisal



New Product Development Process



Future Cooperation Chance

- **Through the proved design, qualification & MP capability, Compal is glad to seek for cooperation chance :**
 - ODM project
 - EMS/JDM opportunity

Thank You